



# Thistle Oyster Roast Regatta

## Severn Sailing Association, Annapolis, MD



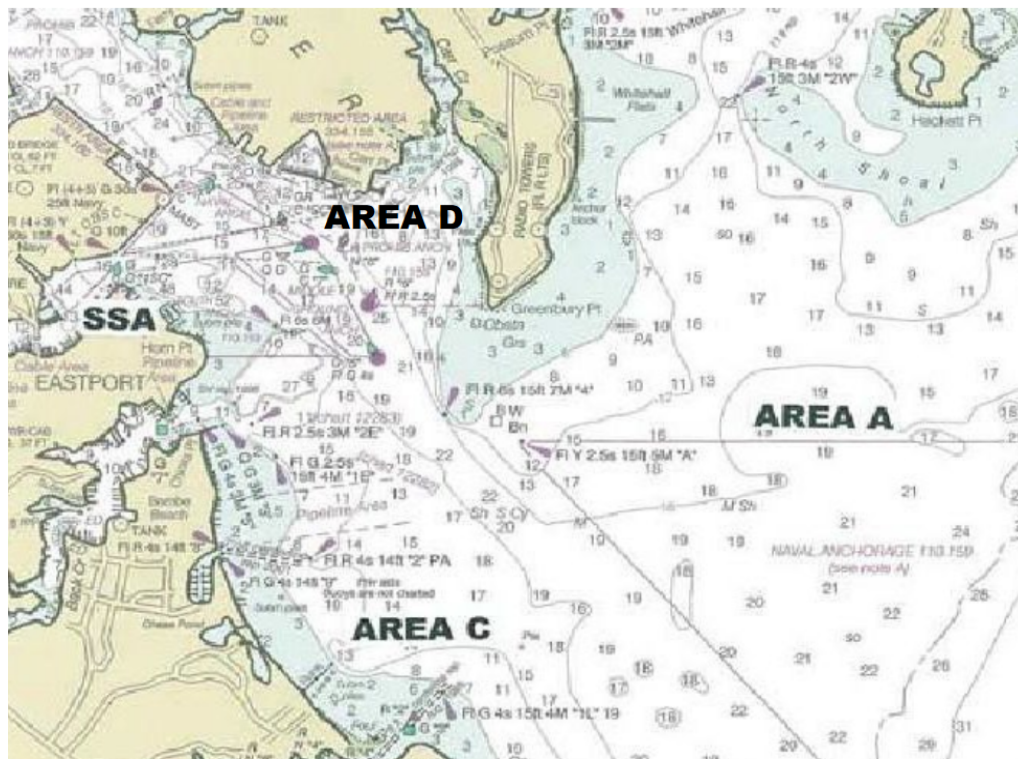
October 8-9, 2022

## SAILING INSTRUCTIONS

The notation '[NP]' in a rule means that a boat may not protest another boat for breaking that rule. This changes RRS 60.1(a). The notation "[DP]" in a rule means that the penalty for a breach of that rule may, at the discretion of the Protest Committee, be less than disqualification.

### 1. RACING AREAS

- 1.1 The racing area will be SSA Area "A" approximately 1 mile east of Greenbury Point, or Area "C" off Bembe Beach.



### 2. SIGNALS MADE ASHORE

- 2.1 Signals made ashore will be displayed on the flagpole on the SSA deck
- 2.2 When the "AP" race signal is displayed ashore, '1 minute' is replaced with 'not less than 60 minutes' in the race signal "AP". This changes RRS Race Signals.

### 3. SCHEDULE OF RACES

- 3.1 Saturday 1130 Warning signal for Race 1, additional races to follow as conditions permit  
3.2 Sunday 1000 Warning signal, additional races to follow as conditions permit.  
3.3 Sunday No start after 1400

### 4. CLASS FLAGS

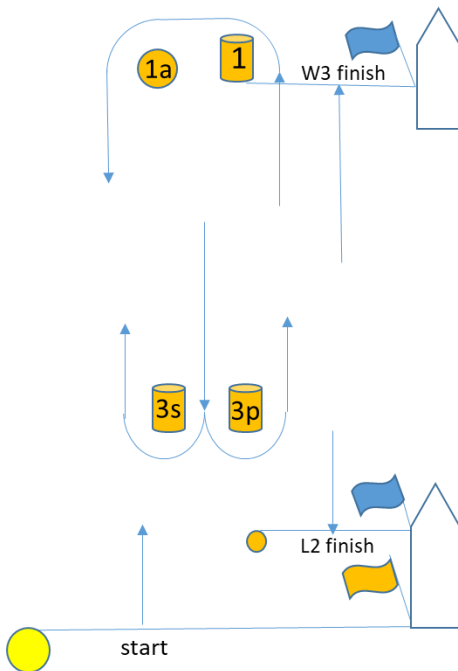
- 4.1 The Class Flag will be a Thistle insignia on a white background.

### 5. THE COURSES

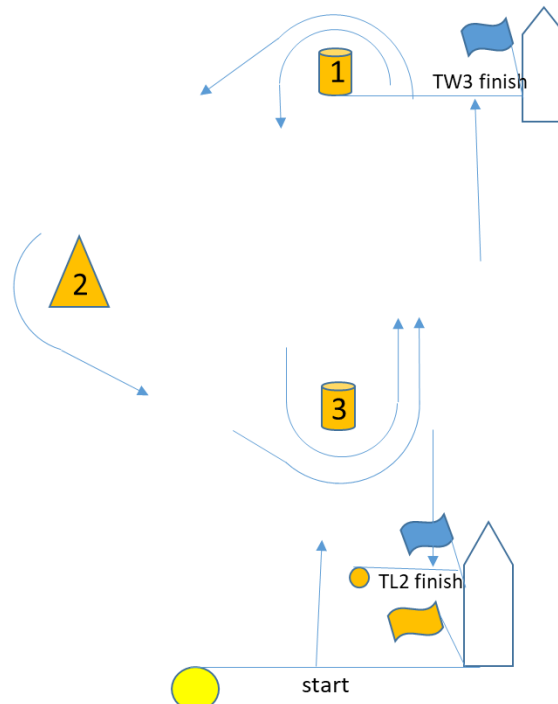
- 5.1 No later than the warning signal, the race committee will designate the course by displaying one or two letters followed by a number, and it will also display the approximate compass bearing to the first mark of the course.

#### 5.2 Course Diagrams

LA2 and WA3



TL2 and TW3



Signal	Description	Mark rounding order
LA2	Leeward finish, 2 windward legs	start, 1, 1a, 3s/3p, 1, 1a, finish
WA3	Windward finish, 3 windward legs	start, 1, 1a, 3s/3p, 1, 1a, 3s/3p, finish
TL2	Triangle, leeward finish, 2 windward legs	start, 1, 2, 3, 1, finish
TW3	Triangle, windward finish, 3 windward legs	start, 1, 2, 3, 1, 3, finish

## **6. MARKS**

- 6.1 The starting mark will be a staff displaying an orange flag on an anchored race committee vessel, or a yellow cylinder.
- 6.2 Marks 1 and 3 will be orange cylinders. Mark 2 will be an orange tetrahedron.
- 6.3 The offset mark will be an orange sphere.
- 6.4 The finishing mark will be an orange sphere.
- 6.5 New marks used in accordance with RRS 33, changing the next leg of the course, will be orange tetrahedrons.

## **7. SAFETY REGULATIONS [NP][DP]**

- 7.1 Upon arriving in the starting area, boats shall check-in with the race committee by sailing past the stern of the race committee Signal Boat on starboard tack, hailing their sail number and receiving verbal confirmation from the race committee.
- 7.2 A boat failing to comply with the check-in procedure may receive, without a hearing, a 20% scoring penalty in the first race in which the boat competes, calculated in accordance with RRS 44.3(c). This changes RRS 63.1 and A4.
- 7.3 A boat that retires from a race shall notify the race committee at the first reasonable opportunity.

## **8. THE START**

- 8.1 The starting line will be between a staff displaying an orange flag on the race committee vessel and a staff displaying an orange flag on a race committee vessel or the course side of the starting mark.
- 8.2 A boat starting later than 5 minutes after her starting signal will be scored Did Not Start (DNS) without a hearing. This changes RRS 63.1, A4 and A5.
- 8.3 The race committee intends to hail boats on the course side (OCS). Hails may be made with a loud hailer, or on VHF 65A, or both. A boat may not base a request for redress on failure of the race committee to hail any sail or hull numbers; failure of a boat to hear a hail; a boat's position in the sequence of hails; promptness of the hail. This changes RRS 62.1.

## **9. CHANGE OF THE NEXT LEG OF THE COURSE**

- 9.1 To change the next leg of the course, the race committee will lay a new mark (or move the finish line), in accordance with RRS 33, and remove the original mark as soon as practicable. When in a subsequent change a new mark is replaced, it will be replaced by an original mark.

## **10. THE FINISH**

- 11.1 The finishing line will be between a staff displaying a blue flag on a race committee vessel and the course side of the finishing mark.

## **11. TIME LIMITS**

- 11.1 Race Time Limit. The time limit for the first boat to finish a race shall be 120 minutes.
- 11.2 Finishing Window. Boats which have not finished and are still racing 30 minutes after the first boat finishes will be recorded as "Time Limit Expired" (TLE) and will receive a score 2 points more than the number of finishers. This changes RRS 35, A5.1, A5.2 and A10.

## **12. PROTESTS, REQUESTS FOR REDRESS AND SCORING INQUIRIES**

- 12.1 Hearing Request Forms and Scoring Inquiry Forms are available in the Club Room on the second deck of the club house. Protests, requests for redress, scoring inquiries or a request for reopening a hearing shall be delivered to the jury desk on the second floor deck of the SSA clubhouse within the appropriate time limit.
- 12.2 The protest time limit is 90 minutes after the race committee Dock time posted on the official notice board. This changes rule 62.2.
- 12.3 Scoring inquiries and requests for redress shall be submitted within the protest time limit. This changes RRS 62.2.
- 12.4 Notices will be posted no later than 30 minutes after the protest time limit to inform competitors of hearings in which they are parties or named as witnesses and where the hearings will be held.
- 12.5 Notices of protests by the race committee, technical committee or protest committee will be posted on the official notice board to inform boats under RRS 61.1(b).

## **13. SCORING INQUIRIES**

- 13.1 If a competitor believes there is a scoring discrepancy, the competitor may complete the Scoring Inquiry Form available on the official notice board and submit the form to the jury desk.
- 13.2 The race committee will review the request and determine whether there is a scoring error.
- 13.3 If the competitor is unsatisfied with the outcome of the scoring inquiry process, the competitor may file a request for redress, which must be submitted as soon as possible.

Version Final  
9/10/22