

2022 SOLING CLASS NORTH AMERICAN CHAMPIONSHIPS SAILING INSTRUCTIONS

NOTE: Any amendments to Sailing Instructions: 1, 3, 5.2, 8.3 and 17 have to be approved by the ISA Championship Committee at least 2 weeks before the start of the event

1. RULES

- 1.1 The regatta will be governed by the rules as defined in The Racing Rules of Sailing.
- 1.2 The following US Sailing prescriptions will apply: RRS 61.4 and the prescriptions to rules 60.3, 67, and 76.1. The prescriptions that will apply are stated in Attachment 3.
- 1.3 ISA Championship Rules will apply.
- 1.4 As permitted by RRS 86.1(c), racing rules 42.3(c) and 31 will be changed as follows:
 - a) RRS 42.3 (c) is altered to : Except on a beat to windward, when surfing (rapidly accelerating down the leeward side of a wave) or planing is possible ,the crew may pull the sheet controlling any sail in order to initiate surfing or planing, but not more than twice for each wave or gust of wind. The pumping of the main sheet directly from the main sheet boom block is permitted. In addition, pumping of the spinnaker guy is permitted at all times without restriction. In this part of the Rule "pumping of the spinnaker guy" means repeatedly trimming and releasing the guy by any means. Moving the body as reasonably necessary to pump the guy is permitted and shall not be considered to be ooching (see RRS 42.2 (c)), nor shall any rolling of the boat caused by such reasonably necessary movements be considered rocking (see RRS 42.2 (b)).
 - b) RRS 31 is altered to: "While racing, neither the crew nor any part of a boat's hull shall touch a starting mark before starting, a mark that begins, bounds or ends the leg of the course on which she is sailing, or a finishing mark after finishing. In addition, while racing, a boat shall not touch a race committee vessel that is also a Mark."
 - c) RRS 63.7 is altered when there is a conflict between the Notice of Race and these Sailing Instructions; The Sailing Instructions will take precedence.
- 1.5 Special Rules:
 - a) After the warning signal for a race the registered helmsperson shall not leave the helm except in an emergency or with the prior written permission of the Race Committee or International Jury.
- 1.6 Where there is a conflict between languages the English text will take precedence.
- 1.7 Amendments to any of the rules applying to the regatta must be approved and signed by the ISA Liaison Officer appointed for the event before it is posted or published.

2. NOTICES TO COMPETITORS

Notices to competitors will be posted on the official notice board located at the SSA Snack Bar.

3. CHANGES TO SAILING INSTRUCTIONS

- 3.1 After the beginning of registration the following Sailing Instructions may not be changed: 1, 3, 5.2, 8.3, 17.
- 3.2 Any change to the sailing instructions will be posted 3 hours before the start of the first race on the day that it will take effect, except that any change to the schedule of races will be posted by 20:00 on the day before it will take effect.

4. SIGNALS MADE ASHORE

- 4.1 Signals made ashore will be displayed at the mast immediately in front of the SSA clubhouse
- 4.2 When flag AP is displayed ashore, '1 minute' is replaced with 'not less than 60 minutes' in the race signal AP.

5. SCHEDULE OF RACES

- 5.1 Dates of Racing:

<u>Date</u>	<u>Races</u>	<u>Warning Signal Time</u>
Thursday October 20	2	1200
Friday October 21	3	1100
Saturday October 22	2	1100
Sunday October 23	2	1000

- 5.2 9 races are scheduled of which 4 must be completed to constitute a valid championship.

A maximum of 4 races per day may be sailed. A third race may be sailed on any day provided that it does not cause the number of remaining races to be less than the number of scheduled race days remaining. A fourth race may be sailed only at the last day to only validate the championship. A second or third or fourth race to be held on any day will be signalled by displaying flag D on the race committee boat at the finish line of the previous race.

5.4 When a subsequent race will be held on a day the warning signal for that race will be made as soon as practicable. To alert boats that a race will begin soon the orange flag will be displayed with one sound for at least 5 minutes before a warning signal is made.

5.5 On the last day of the regatta no warning signal will be made after 1400 hrs.

6. CLASS FLAG

The Class flag will be the class logo on a white background.

7. RACING AREAS

Attachment 1 shows the location of the racing areas.

8. THE COURSE

8.1 The diagram in Attachment 2 show the course, including the approximate angle between legs, the order in which marks are to be passed and the side on which each mark is to be left.

8.2 No later than the warning signal, the race committee signal boat will display the approximate distance of the first leg and the approximate compass bearing of the first leg.

8.3 Courses may only be shortened by eliminating the final lap or individual legs of that lap. This changes RRS 32. The segment from the last gate to the finish line (mini reach) is not a leg but part of the last downwind leg of the course.

9. MARKS

9.1 Marks 1, 1a (offset mark), and 3s-3p will be Orange inflatable cylinders.

9.2 New marks as provided in SI 12.1 will be Orange inflatable tetrahedrons.

9.3 The starting mark will be a Yellow cylinder and the finishing mark will be an Orange ball.

9.4 A race committee vessel signalling a change of a leg of the course is a mark as provided in SI 12.2.

10. AREAS THAT ARE OBSTRUCTIONS

N/A

11. THE START

11.1 Races will be started by using RRS 26 with the warning signal made 5 minutes before the starting signal.

11.2 The starting line will be between a staff displaying an orange flag on the signal boat, and either the course side of the starting mark, or a staff displaying an orange flag on a pin-end race committee boat.

11.3 A boat that does not start within four (4) minutes after her starting signal will be scored Did Not Start without a hearing. This changes RRS A4 and A5.

12. CHANGE OF THE NEXT LEG OF THE COURSE

12.1 To change the next leg of the course, the race committee will lay a new mark (or move the finishing line) and remove the original mark as soon as practicable. When in a subsequent change a new mark is replaced, it will be replaced by an original mark.

12.2 Except at a gate, boats shall pass between the race committee vessel signalling the change of the next leg and the nearby mark, leaving the mark to port and the race committee vessel to starboard. This changes RRS 28

13. THE FINISH

The finishing line will be between a staff displaying blue flag on a race committee vessel and the adjacent mark.

14. PENALTY SYSTEM

a) The first two sentences of RRS 44.1 are changed to: 'A boat may take a One-Turn Penalty when she may have broken one or more rules of Part 2 or rule 31 of the RRS in an incident while racing.

b) A boat that has taken a penalty or retired shall complete an acknowledgement form at the race office within the protest time limit.

15. TIME LIMITS

15.1 The time limits for the leading boat are:

Mark 1

Race

30 minutes

Courses 1: 2.0 hours

If no boat has passed Mark 1 within the Mark 1 time limit the race will be abandoned. Failure to meet the target time will not be grounds for redress. This changes RRS 62.1(a)

- 15.2 Boats finishing more than 25 minutes after the first boat sails the course and finishes will be scored Did Not Finish without a hearing, this changes RRS 35, A4 and A5

16. PROTESTS AND REQUESTS FOR REDRESS

- 16.1 Protest forms are available from the race office. Protests and requests for redress or reopening shall be delivered there within the appropriate time limit.
- 16.2 The protest time limit is 90 minutes after the last boat has finished in the last race of the day or the race committee signals no more racing today, whichever is later
- 16.3 Notices will be posted no later than 30 minutes after the protest time limit to inform competitors of hearings in which they are parties or witnesses. Hearings will be held in the protest room located at the second floor of the clubhouse beginning at the time posted.
- 16.4 Notices of protests by the race committee, technical committee, or protest committee will be posted to inform boats under Rule 61.1(b).
- 16.5 Breaches of SI 11.3, 14 and 18,21, 23, 25, 26, 27 will not be grounds for protest by a boat. This changes Rule 60.1(a).
- 16.6 On the last scheduled day of racing a request for redress, based on a protest committee decision shall be delivered no later than 30 minutes after the decision was posted. This changes RRS 62.2:
- 16.7 Decisions of the international jury will be final as provided in Rule 70. 5.

17. SCORING

- 17.1 The Low Points scoring system of Appendix A as amended below will apply.
- 17.2 Four (4) races are required to be completed to constitute a championship
- a) When fewer than 5 races have been completed a boat's series score will be the total of her race scores.
- b) When 5 or more races have been completed a boat's series score will be the total of her race scores excluding her worst score.

18. SAFETY REGULATIONS

- 18.1 Boats not leaving harbour for the days racing shall inform the race office. A boat that retires from a race shall notify the race committee as soon as possible. [DP]
- 18.2 When the Red Cross emblem (a red cross on a white background) or flag 'V' is displayed on the race committee signal boat coaches and other team support boats shall collaborate with the race committee in rescue assistance.[DP]
- 18.4 Boats arriving at a point ashore other than the harbour for any reason and that cannot get to the harbour without assistance shall report immediately by telephoning (301) 646-5335 [DP]
- 18.5 Penalties for infringing this SI shall be decided by the jury and may include having to pay the expenses of search and rescue operations.

19. REPLACEMENT OF CREW OR EQUIPMENT

- 19.1 Substitution of competitors will not be allowed without the prior written approval of the International Jury. Such approval may be given in case of injury, illness or other non-preventable circumstances or when notified at registration. [DP]
- 19.2 Substitution of damaged or lost equipment will not be allowed unless approved by the Race Committee. Requests for substitution shall be made to the Race Committee at the first reasonable opportunity.[DP]

20. EQUIPMENT AND MEASUREMENT CHECKS

On the water, a boat can be instructed by a member of the race committee or the technical committee to proceed immediately to a designated area for inspection. Ashore, equipment may be inspected, or measured at times specified in the class rules, the notice of race, the championship rules. Each team shall stamp the sails they will use with the event stamp prior to race the first race, only one mainsail, two jibs and two spinnakers are permitted.

21. EVENT ADVERTISING

N/A

22. OFFICIAL BOATS

Official boats will be marked as follows:

Signal Boat – Favored End

Starting Line Boat – Hugh E

23. SUPPORT BOATS

- 23.1 Team leaders, coaches and other support persons shall stay outside areas where boats are racing from the time of the preparatory signal for the first race until all boats have finished or retired or the race committee signals a postponement, general recall or abandonment. [DP]
- 23.2 Support boats shall be marked with. [DP].

24. TRASH DISPOSAL

Trash may be placed aboard support or official boats

25. HAUL-OUT RESTRICTIONS

There are no haul-out restrictions.

26. DIVING EQUIPMENT AND PLASTIC POOLS

Underwater breathing apparatus and plastic pools or their equivalent shall not be used around boats between the starting signal of the first race and the end of the regatta. [DP]

27. COMMUNICATIONS

- 27.1 Except in an emergency, a boat that is racing shall not make voice or data transmissions and shall not receive voice or data communication that is not available to all boats. [DP]
- 27.2 All boats are required to carry on board fully charged and with the free Kwindoo application installed and running during racing. If no mobile is available at the boat the Kwindoo staff should provide with one. This modify Class Rules C.3.1(b.1). [DP]
(to be used only when Kwindoo is tracking the event , otherwise delete 27.2)
- 27.3 The boats requested by the organizing authority are required to carry onboard cameras, or sound equipment provided by the OA. [DP]

28. PRIZES

Prizes will be awarded as follows:

- Medals for the top three teams
- **The Bear**: Perpetual trophy, donated by the Canadian Soling Association “with the intention of bringing together as many competitors of various nationalities as possible for yacht racing in a friendly spirit”. To the winning team of ISA North American Championship.
- **Samuel V. Merrick (USA) Trophy**: Perpetual trophy donated by Sam Merrick to the winning team of the North American Championship.
- **Jack van Dyke Trophy**: After the first day of races for the Soling North Americans the fleet is spilt in half. This is based on the cumulative finish record of that day for each boat. The top half of the fleet are then for the rest of the regatta in the blue division and the rest of the fleet are the red division. Only a red division boat can win the trophy. At the end of the regatta the top finisher in the red division wins the Jack Van Dyke award
- Daily First
- Other prizes may be awarded at the discretion of the Organizing Authority
- If the ISA Championship is not completed, the prizes may be presented at the discretion of the Host Club.

27. DISCLAIMER

Competitors participate in the regatta entirely at their own risk: see RRS 4, Decision to Race. The organizing authority will not accept any liability for material damage or personal injury or death sustained in conjunction with or prior to, during, or after the regatta.

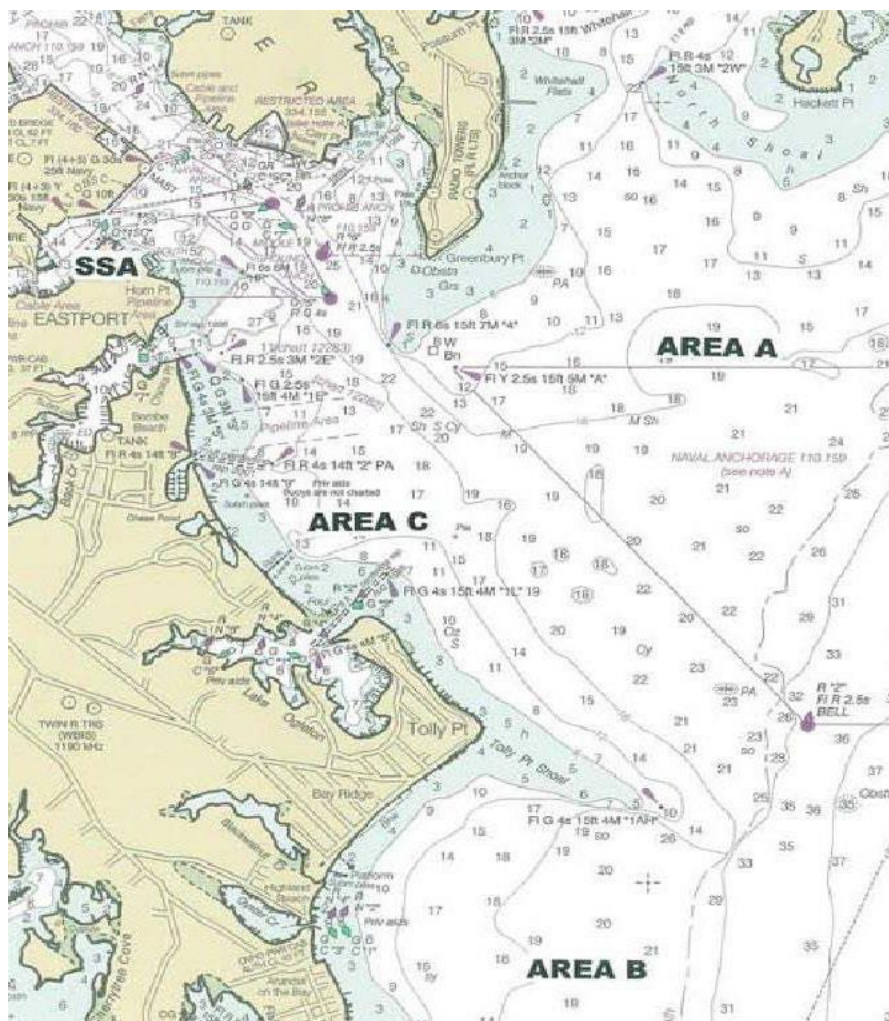
28. INSURANCE

Each participating boat shall be insured with a valid third-party liability insurance with a minimum cover of \$300,000 USD per incident or the equivalent in the currency of the country of registration of the boat.

ATTACHMENT 1

RACING AREAS

(Place here an image of the racing area location in a map and delete this reference.)



ATTACHMENT 2

COURSES

All marks shall be rounded to port except when SI 12.2 applies, or in a gate.

Course 1

Start - 1 - Offset - 3(3S-3P when a gate) - 1 - Offset - 3(3S-3P when a gate) - 1 - Offset - 3(3S-3P when a gate) - Finish

The segment '3(gate) - Finish' is not a leg.

All marks to be rounded to port. Mark 3 may be a gate.

In the first beat to windward (leg number 1) gate is not a mark of the leg.

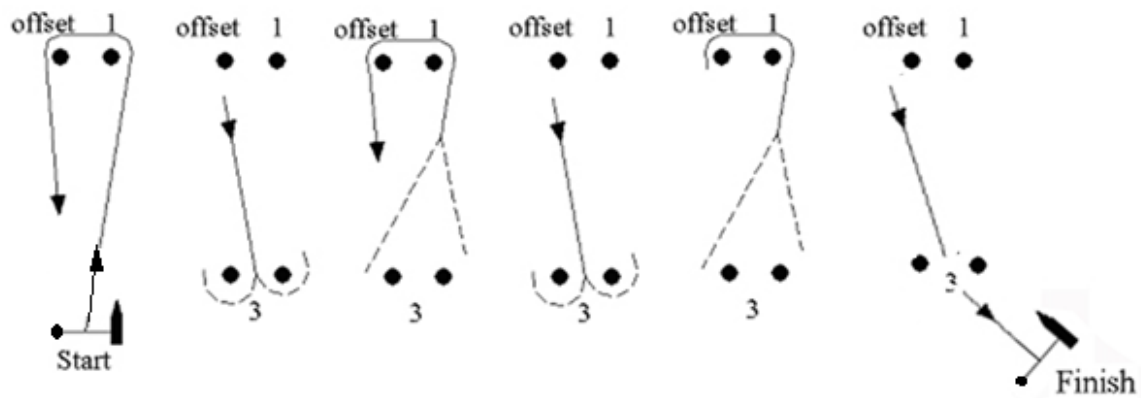
The length of the first beat will depend on entries quantity

29 entries and under about 0,75 to 1.2 NM

30 entries and over about 0.9 to 1.2 NM

The recommended distance about 1NM.

Course 1



ATTACHMENT 3 – US SAILING PRESCRIPTIONS

Rule 60.3

After rule 60.3 add US Sailing prescribes that rule 60.3(b) is changed to:

- (b) request redress for a boat or call a hearing to consider redress; or

Rule 61.4

Add rule 61.4 61.4 Fees for Protests and Requests for Redress US Sailing prescribes that no fees shall be charged for protests or requests for redress.

Rule 67

After rule 67 add US Sailing prescribes that:

- (a) A boat that retires from a race or accepts a penalty does not, by that action alone, admit liability for damages.
- (b) A protest committee shall find facts and make decisions only in compliance with the rules. No protest committee or US Sailing appeal authority shall adjudicate any claim for damages. Such a claim is subject to the jurisdiction of the courts.
- (c) A basic purpose of the rules is to prevent contact between boats. By participating in an event governed by the rules, a boat agrees that responsibility for damages arising from any breach of the rules shall be based on fault as determined by application of the rules, and that she shall not be governed by the legal doctrine of 'assumption of risk' for monetary damages resulting from contact with other boats.

Rule 76.1

After rule 76.1 add US Sailing prescribes that an organizing authority or race committee shall not reject or cancel the entry of a boat or exclude a competitor eligible under the notice of race and sailing instructions for an arbitrary or capricious reason or for reason of race, color, religion, national origin, gender, sexual orientation, or age.