



2024 Soling North American Championship

May 8 to 12, 2024

Annapolis, Maryland

Organizing Authorities:
International Soling Class Association
Severn Sailing Association

*The notation **[NP]** in a rule in the NOR or Sailing Instructions means that a boat may not protest another boat under this rule. (This changes RRS 60.1(a))*

1. RULES

- 1.1 This ISC (ISA Championship) is governed by the rules as defined in The Racing Rules of Sailing.
- 1.2 The following RRS will be changed: 32, 33, 35, 42.3(c), 44.1, 62, 63.7, A4, A5.
 - a) RRS 42.3(c1) is changed conform SCR Soling Class Rules) C.9.1 as permitted by RRS 86.1(c).
- 1.3 The following prescriptions of the US Sailing National Authority (US Sailing) will apply:
 - a) Rule 32 - US Sailing prescribes that, if the sailing instructions so state, the race committee may display flag A (with no sound) while boats are finishing to signal that there will be no more races conducted that day;
 - b) 61.4 Fees for Protests and Requests for Redress US Sailing prescribes that no fees shall be charged for protests or requests for redress
 - c) US Sailing prescribes that rule 60.3(b) is changed to: (b) request redress for a boat or call a hearing to consider redress;
 - d) After Rule 67add: (a) A boat that retires from a race or accepts a penalty does not, by that action alone, admit liability for damages. (b) A protest committee shall find facts and make decisions only in compliance with the rules. No protest committee or US Sailing appeal authority shall adjudicate any claim for damages. Such a claim is subject to the jurisdiction of the courts. (c) A basic purpose of the rules is to prevent contact between boats. By participating in an event governed by the rules, a boat agrees that responsibility for damages arising from any breach of the rules shall be based on fault as determined by application of the rules, and that she shall not be governed by the legal doctrine of 'assumption of risk' for monetary damages resulting from contact with other boats.
 - d) After rule 76.1 add US Sailing prescribes that an organizing authority or race committee shall not reject or cancel the entry of a boat or exclude a competitor eligible under the notice of race and sailing instructions for an arbitrary or capricious reason or for reason of race, color, religion, national origin, gender, sexual orientation, or age.

2. CHANGES TO SAILING INSTRUCTIONS

- 2.1 Any change to the sailing instructions:
 - a) Will be posted before 09.00 on the day it will take effect, except that any change to the schedule of races will be posted by 20.00 on the day before it will take effect.
 - b) The ISA Liaison officer must, before posting or publishing, counter sign each and every change to the Sailing Instructions as well as changes to the schedules or registration, inspection, and social events. See also ICM (ISA Championship Manual) E2.2 to E2.5.
- 2.2 After the beginning of registration the following Sailing Instructions may not be changed:
1, 2, 6.3, 9.3, 18, 19.

3. COMMUNICATIONS WITH COMPETITORS

- 3.1 Notices to competitors will be posted on the official notice board located at the ground floor level of the SSA Clubhouse in the snack bar seating area directly opposite the Snack Bar service window.
- 3.2 The race office is located at *the club house*.
- 3.3 [DP] From the first warning signal until the end of the last race of the day:
 - a) Except in an emergency, a boat shall not make voice or data transmissions and shall not receive voice or data communication that is not available to all boats.
 - b) The OA may require a boat to carry onboard a tracking device or smartphone with KWINDOO installed and running with devices fully charged. The Tracking provider, Host Club, or ISA will supply an if a boat has no access to a suitable device.

4. CODES OF CONDUCT

- 4.1 [DP] Competitors and support persons shall comply with reasonable requests from race officials.
- 4.2 [DP] Competitors and support persons shall handle any equipment or place advertising provided by the organizing authority with care, seamanship, in accordance with any instructions for its use and without interfering with its functionality.

5. SIGNALS MADE ASHORE

- 5.1 Signals made ashore will be displayed at the Flagpole immediately in front of the SSA Clubhouse.
- 5.2 When flag AP is displayed ashore, '1 minute' is replaced with 'not less than 60 minutes' in the race signal AP.

6. SCHEDULE OF RACES

- 6.1 On any given day, a maximum of two races, may be sailed. See schedule below. However, a third race may be sailed from the second day on in order to bring the series back to, or towards, the published schedule of races.

6.2 Schedule of Racing:

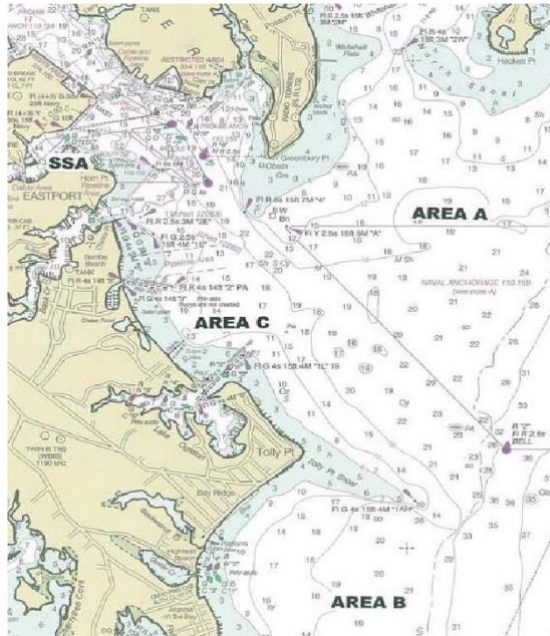
<u>Date</u>	<u>Races</u>	<u>Warning Signal Time</u>
Thursday May 9	2	1200
Friday May 10	2	1100
Saturday May 11	2	1100
Sunday May 12	2	1000

- 6.3 Eight (8) races are scheduled of which 4 must be completed to constitute a valid championship, this changes NOR 14.2 and ICM J.18.2.
- 6.4 To alert boats that a race will begin soon the orange starting line flag will be displayed with one sound for at least five (5) minutes before a warning signal is made.
- 6.5 On the last day of the regatta no warning signal will be made after 14:00 hrs.

7. CLASS FLAG

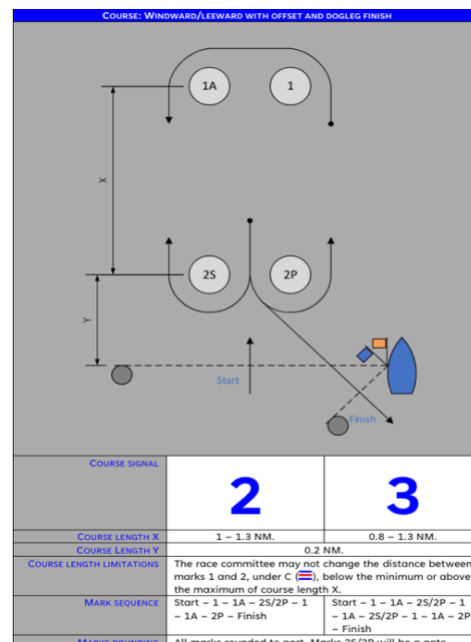
The Class flag will be the class logo on a white background.

8. RACING AREAS



9. THE COURSE

- 9.1 The diagram below shows the courses including the approximate angles between legs, the order in which marks are to be passed, and the side on which each mark is to be left. Also, the approximate course length is shown.



- 9.2 No later than the warning signal, the race committee signal boat will display the approximate distance, and the approximate compass bearing to Mark 1
- 9.3 Courses may not be shortened using flag S () neither length in between marks altered using “+” or “-“. This changes RRS 32 and RRS 33.

10. MARKS

- 10.1 Marks 1, 1A (offset mark), and 2 (or 2S-2P if a gate) will be orange inflatable cylinders.
- 10.2 New marks as provided in SI 13.1 will be an orange inflatable tetrahedron.
- 10.3 The starting marks will be the RC vessels displaying staffs bearing orange flags or between the staff bearing an orange flag on the Signal Vessel and a yellow cylinder.
- 10.4 The finishing marks will be an orange ball and the staff bearing a blue flag on a nearby vessel.
- 10.5 If a leeward mark is shown as gate, the gate may be replaced by a single mark. If a gate is replaced by a single mark, that mark is to be left to port.

11. OBSTRUCTIONS

There are no obstructions.

12. THE START

- 12.1 Races will be started by using RRS 26 with the warning signal made 5 minutes before the starting signal.
- 12.2 The starting line is between a staff displaying an orange flag on the Signal Boat and either 1) the staff bearing an orange flag on a nearby vessel or 2) the course side of a yellow cylinder.
- 12.3 A boat that does not start within five (5) minutes after her starting signal will be scored Did Not Start without a hearing. This changes RRS A5.1 and A5.2.

13. CHANGE OF THE NEXT LEG OF THE COURSE

- 13.1 To change the next leg of the course, the race committee will lay a new mark (or move the finishing line) and remove the original mark as soon as practicable. When in a subsequent change a new mark is replaced, it will be replaced by an original mark.

14. THE FINISH

- 14.1 The finish line is between a staff displaying a flag on the finish vessel at the port-end and the course side of the starboard-end finishing mark.
- 14.2 The RC may display Code Flag A (with no sound) while boats are finishing to signal that there will be no more racing that day (US Sailing Prescription 32.2)

15. [NP] PENALTY SYSTEM

- 15.1 RRS 44.1 is changed so that the Two-Turns Penalty is replaced by the One-Turn Penalty.

16. TIME LIMITS AND TARGET TIMES

- 16.1 The Mark 1 Time Limit, Race Time Limit (see RRS 35), and the Finishing Window are shown in the table below.

COURSE	MARK 1 TIME LIMIT	RACE TIME LIMIT	FINISHING WINDOW
2	40 minutes	120 minutes	30 minutes
3	40 minutes	120 minutes	30 minutes

- 16.2 If no boat passes the first mark within the Mark 1 Time Limit or if no boat sails the course and finishes within the Race Time Limit the race will be abandoned.
- 16.3 The Finishing Window is the time for boats to finish after the first boat sails the course and finishes. boats failing to finish within the Finishing Window, will be scored DNF-

17. HEARING REQUESTS

- 17.1 The protest time limit is:
 - 17.1.1 60 minutes after the last boat has finished the last race of the day or the race committee signals no more racing today, whichever is later. The time will be posted on the official notice board(s).
 - 17.1.2 On the last scheduled day of racing a request for redress based on an International Jury decision shall be delivered no later than 30 minutes after the decision was posted. This changes RRS 62.2(a).
- 17.2 Hearing request forms are available at the race office.
- 17.2.1 Request For Hearings shall be filed at the Protest Desk located on the second floor of the club house.
- 17.3 Notices will be posted no later than 30 minutes after the protest time limit to inform competitors of hearings in which they are parties or named as witnesses. Hearings will be held in the protest room, located at the 2nd floor at SSA Club house, beginning at the time posted.
- 17.4 No hearings shall take place between 23:00 and 07:00 hours local time.
- 17.5 Decisions of the international jury will be final as provided in Rule 70. 5.

18. SCORING

- 18.1 The Low Point System of Appendix A will be used.
- 18.2 Four (4) races are required to be completed to constitute a series, this changes NOR 14.2 and ICM J.18.2.
- 18.3 When:
 - a) When less than 6 races have been completed a boat's series score will be the total of her race scores.
 - b) When 6 or more races have been completed a boat's series score will be the total of her race scores excluding her worst score.
- 18.4 Rule A5.3 applies.

19. [DP] [NP] SAFETY REGULATIONS

- 19.1 [DP] A boat that retires from a race shall notify the race committee at the first reasonable opportunity in person at the race office or on phone number: *Barbara Vosbury 410-570-3435 or Steve Sinatra. 410-263-0071.*

20. [DP] REPLACEMENT OF CREW OR EQUIPMENT

- 20.1 [DP] Substitution of competitors will not be allowed without prior written approval of the Race Committee. This modifies ICM G20 and J20.2.
- 20.2 [DP] Substitution of damaged or lost equipment is not allowed unless authorized in writing by the Race Committee. Requests for substitution shall be made to the RC at the first reasonable opportunity, which may be after the race. This modifies ICM G20 and J20.2

21. [DP] [NP] EQUIPMENT AND MEASUREMENT CHECKS

- 21.1 A boat or equipment may be inspected at any time for compliance with the Soling Class Rules, Notice of Race and Sailing Instructions.
- 21.2 [DP] When instructed by a race official on the water, a boat shall proceed to a designated area for inspection.

22. SUPPLIED BOATS

N/A

23. OFFICIAL BOATS

Official vessels will be identified as follows:

Race committee	Signal Boat will Display Code Flag "L" prior to the Orange
Press	white flag with "Press"

24. [DP] [NP] SUPPORT TEAMS

- 24.1 Support teams, including all support persons and support persons vessels, shall comply with the support team regulations at event website.
- 24.2 [DP] Team leaders, coaches and other support persons shall stay outside areas where Solings are racing from the time of the preparatory signal until all boats have finished or retired or the race committee signals a postponement, general recall, or abandonment.
- 24.3 [DP] Support boats shall be identified with their national letters.
- 24.4 RRS 64.5 (b) is changed as follows:
The race committee may also protest a boat that is a party to a hearing under rule 60.3(d) or 69 for the breach of a rule by a support person. The Protest Committee may change the boat's score in a single race, up to and including disqualification, especially when the protest committee decides that
(1) the boat may have gained a competitive advantage as the result of the breach by the support person or
(2) the support person committed a further breach after having been warned by the protest committee, that a penalty may be imposed

25. [NP] TRASH DISPOSAL

Trash may be placed aboard official or support person vessels.

26. BERTHING

- 26.1 [DP] Boats shall be kept in their assigned places while in the harbor.

27. HAUL-OUT RESTRICTIONS

- 27.1 [DP] Boats shall not be hauled out during the ISC except with and according to the terms of prior written permission of the race committee.

28. DIVING EQUIPMENT AND PLASTIC POOLS

- 28.1 [DP] Underwater breathing apparatus and plastic pools or their equivalent shall not be used around boats between the preparatory signal of the first race and the end of the ISC.
-